

# The Wilkshire

2,323 Living Area

3 Bedroom / 2.5 Bath



*The Poplar Elevation*

## Features

- Spacious Master Bedroom
- Spacious His and Hers Master Walk In Closets
- Garden Tub in Master Bath
- Spacious Living Room
- Two Story Open Foyer
- Spacious Kitchen w/Pantry
- Included Two Car Garage



*The Spruce Elevation*

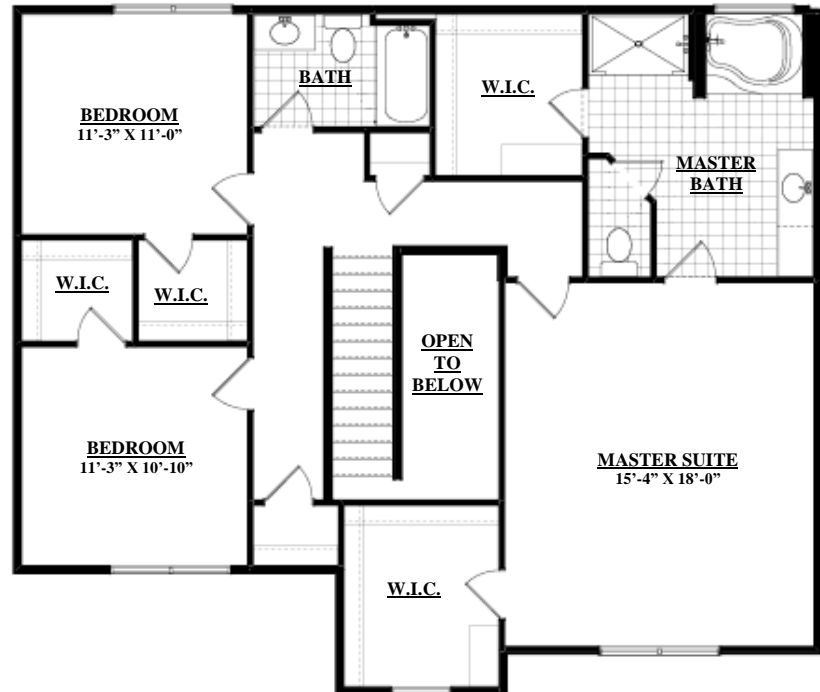
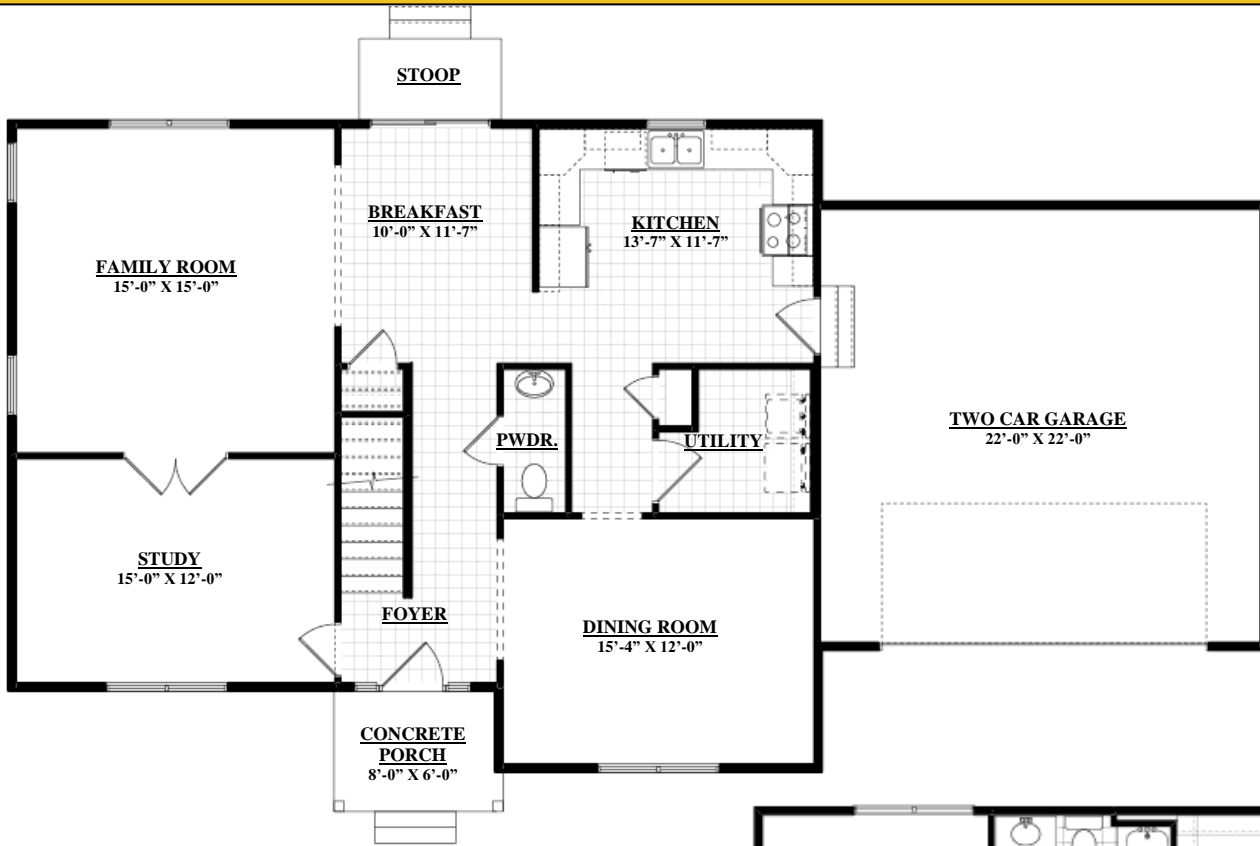
*This drawing is for illustration purposes only. All dimensions are approximate and elevations may reflect optional features and colors. Square footage may vary by elevation.*

*Visit our website or call us today to speak with a sales person.  
Toll Free: 1-877-358-9199 [www.sedgewickhomes.com](http://www.sedgewickhomes.com)*

# The Wilkshire

2,323 Living Area

3 Bedroom / 2.5 Bath



## The Poplar Elevation Floor Plan

Please see Sales Agent for Floor Plan Differences.



This drawing is for illustration purposes only. All dimensions are approximate and elevations may reflect optional features and colors. Square footage may vary by elevation.

Visit our website or call us today to speak with a sales person.  
Toll Free: 1-877-358-9199 [www.sedgewickhomes.com](http://www.sedgewickhomes.com)